

---

# ABOUT US



**HELPSSEKER TECHNOLOGIES**

Solutions for Complex Social Challenges

**Social Tech BCorp:** lean, growth -minded social tech and innovation company



**60+ staff** specializing in tech development, data science, social science, systems change & social innovation

## WE DEVELOP SOLUTIONS FOR

---



**HELP SEEKERS**



**SERVICE PROVIDERS**



**DECISION MAKERS**

**OUR NATIONAL  
PARTNERS**



---



# CMHC provides funding support

In 2020, CMHC announced a **3-year, \$2.5M investment** to support **HelpSeeker's mapping of the social safety net supply** and scale its **navigation app** across the country, with a goal of:

Making it easier for those looking for help to **find the services that meet their needs**

Providing decision makers with **real-time information** about what services are in demand and where

HelpSeeker also previously received funding support from a **National Housing Strategy Solutions Lab** to **implement and improve** the services it provides.



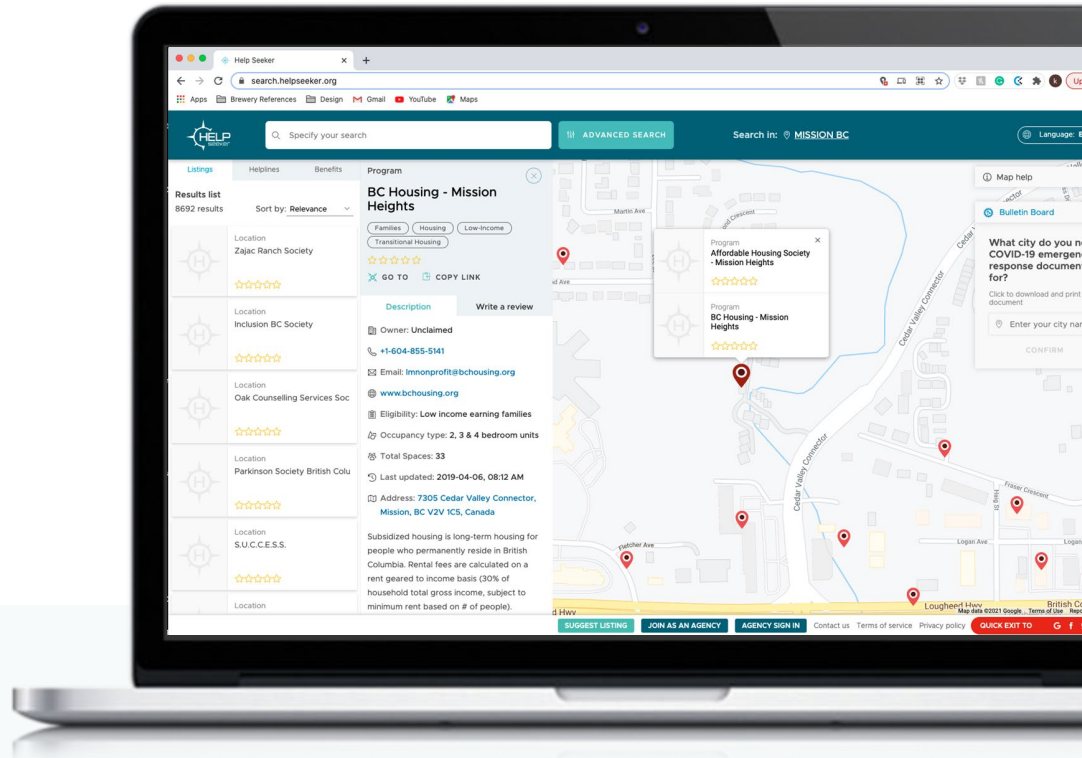
This partnership with HelpSeeker is a result of CMHC's work to **incubate new, innovative ideas**, and **accelerate** or **scale solutions** that address our country's most pressing housing issues.

# HELPSEEKER ACROSS CANADA

AS OF OCTOBER 10, 2021

85,162 Listings

311,000 Services



---



# WHAT'S THE PROBLEM?



**"Help is hard  
to find"**

NO STARTING  
POINT



**"The contact  
info is old."**

CAN'T GET IN  
TOUCH



**"I don't feel  
safe looking  
for help"**

NEED  
ANONYMITY



**"What do I  
search?"**

DON'T KNOW  
SERVICE TYPES

---

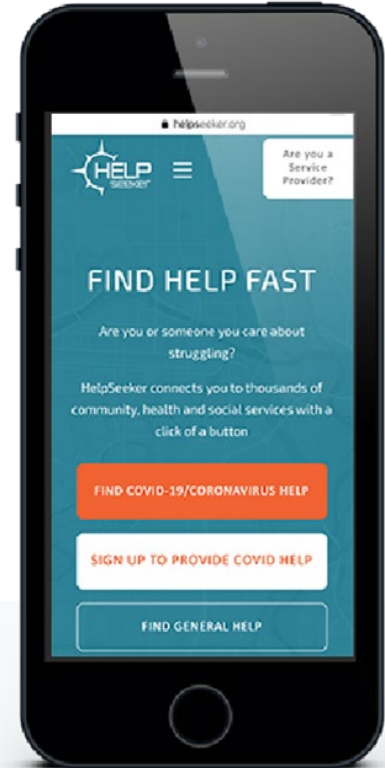


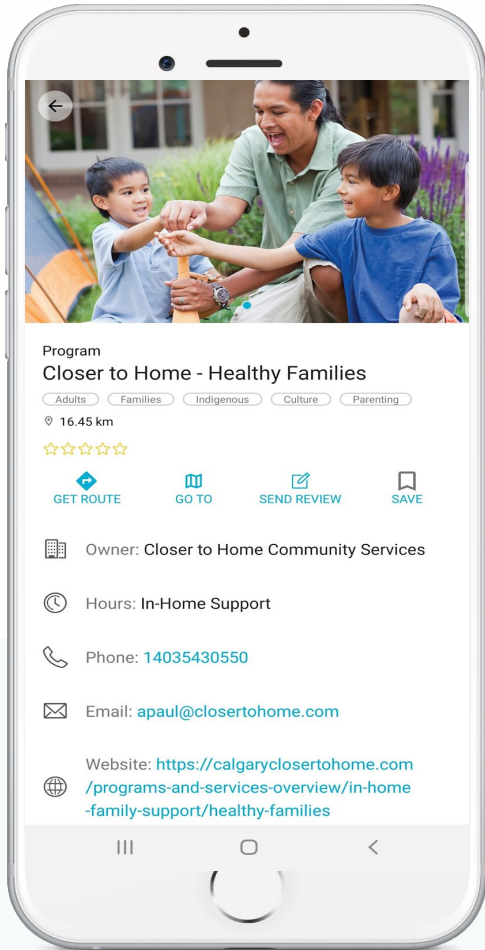
# The HelpSeeker Navigation App

- ✓ Free & easy to use
- ✓ Completely anonymous
- ✓ Available in 23 languages
- ✓ 300 000+ services listed
- ✓ Up-to-date support info
- ✓ Save searches to view later
- ✓ One-stop shop for clients

**Download the app or search**

[www.helpseeker.org](http://www.helpseeker.org)





# Enhancing The Map

Listings on the Systems Map are

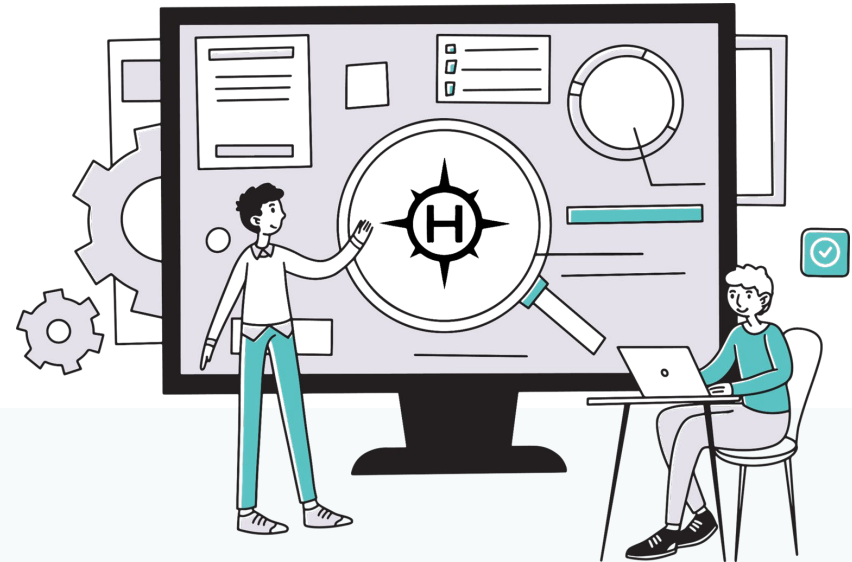
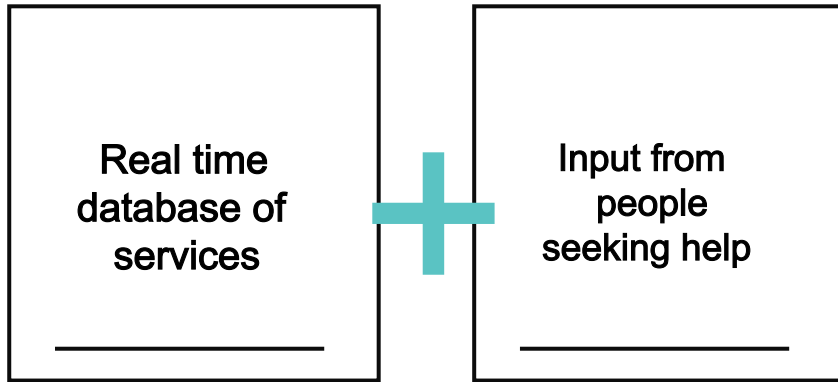
*claimed* (managed by the service provider) or  
*unclaimed* (managed by HelpSeeker every 6 -12 months)

The more listings that are claimed by service providers, the more up-to-date the information is, and the more accurate the systems map is.

---



# Help create social change beyond the individual.



== HARD DATA INFORMING  
== DECISIONS & CREATING CHANGE



**GET  
STARTED**  
on [helpseeker.org](https://helpseeker.org)